



# Dredge Monitoring

INCREASING PRODUCTIVITY & MAINTAINING COMPLIANCE

Capabilities Brochure  
E120 Rev. A

**xylem**  
Let's Solve Water



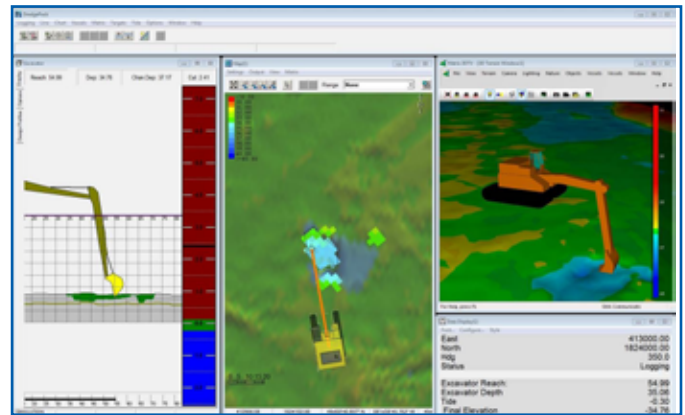
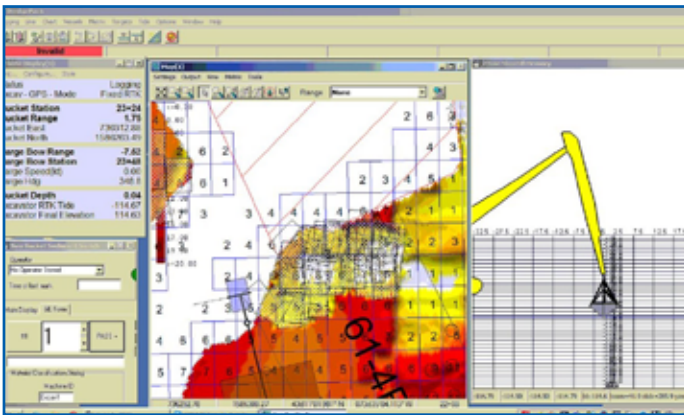
# Enhance Dredging Proficiency

Get the Job Done Right

## DREDGEPACK® Dredging Control on Cutter Suction, Hopper, Excavators and Bucket Dredges

DREDGEPACK® is designed to assist your company in monitoring its digging operations. Area maps, nautical charts and DXF files can be downloaded for geographical reference. A color-coded matrix shows your current depth, while a profile view will show both your current and required depths.

The matrix is updated in real time to ensure you meet your targeted depth. In an industry where you can be heavily fined for not digging to the required depth, DREDGEPACK® becomes a crucial component to any dredging project. DREDGEPACK® provides you with the design tools to be able to accurately model almost any dredge plan.



## Why DREDGEPACK®?

- Fast and reliable customer support
- Single platform to streamline surveying and dredging operations
- The ability to work with over 400 marine sensors of your choice
- Ready built interfaces to the USACE dredge quality management system

## Valued DREDGEPACK® Users



### Better Data, Better Decisions.

For more than 20 years we've been demonstrating how defensible data can change your world.

Dredge Monitoring

E120 Rev. A



# Compliance Monitoring System

Avoid Costly Project Shutdowns

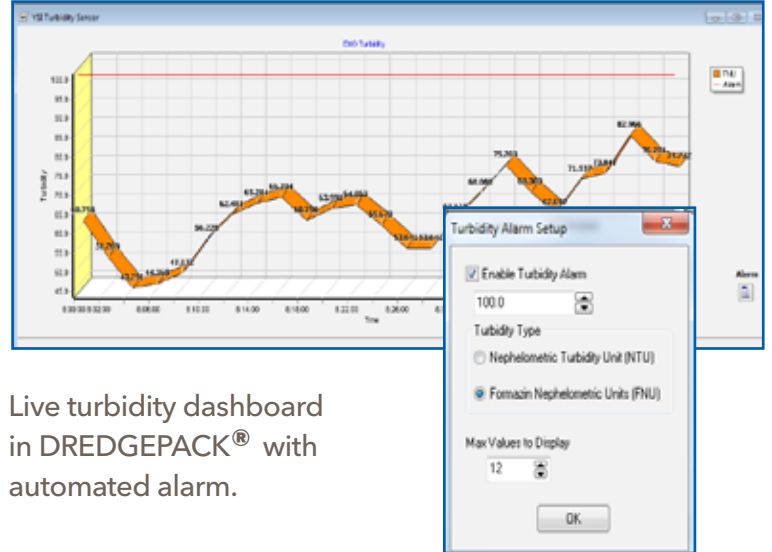
## YSI Turbidity

## Integrated Compliance Alarms

Prevent or minimize operational shutdowns due to turbidity exceedance with live data and alerts integrated directly into DREDGEPACK® software.

### Why Monitor?

- Gain live insight into when turbidity values come near or exceed permitting limits
- Setup alarms to inform both dredge operators and project managers of events via email/text alerts
- Take the guesswork out of environmental compliance and avoid costly penalties



Live turbidity dashboard in DREDGEPACK® with automated alarm.

## Buoy Platform

## Water Monitoring Instruments

Compliance alarms are made possible through the installation of water monitoring instruments near your dredging site.

Xylem offers a suite of buoy mounted platforms with wireless data transmission and web hosting options.



### Buoy Selection

|                               | EMM150                           | EMM350                           | SB-138P                                 |
|-------------------------------|----------------------------------|----------------------------------|---|
| <b>Cost</b>                   | \$                               | \$\$                             | \$\$\$                                  |
| <b>Deployment Environment</b> | Rivers, Lakes, Harbors           | Rivers, Lakes, Harbors           | Harbors, Coastal Areas, Open Ocean      |
| <b>Max Current</b>            | 2 Knots                          | 5 Knots                          | 6 Knots                                 |
| <b>Simple Installation</b>    | ✓                                | ✓                                | X                                       |
| <b>Air Weight</b>             | 60kg (133lb)                     | 170kg (375lb)                    | 454kg (1000lb)                          |
| <b>Alarm Options</b>          | Email, Text Message              | Email, Text Message              | Email, Text Message                     |
| <b>Additional Payload</b>     | Meteorological / Current Sensors | Meteorological / Current Sensors | Meteorological / Current / Wave Sensors |



YSI.com/systems

See reverse for contact information.



# Safety Solutions

Keeping Your Employees Safe Always Matters

Xylem also offers products from **SonTek** and **Aanderaa** to ensure a safe working environment for your field crew. Protect your people with alarms for hazardous weather or water conditions:

- Wind Gusts
- Breaking Waves
- Dangerous Currents
- Rising Water Levels

## Dredge monitoring solutions provided by the following Xylem brands:



**YSI Incorporated**  
info@ysi.com  
YSI.com  
+1 937-688-4255



**SonTek**  
inquiry@sontek.com  
SonTek.com  
+1 858-546-8327



**TIDELAND**  
us-sales@tidelandsignal.com  
TidelandSignal.com  
+1 713-681-6101



**AANDERAA**  
aanderaa.info@xylem.com  
Aanderaa.com  
+47 55-60-48-00



**HYPACK**  
sales@hypack.com  
HYPACK.com  
+1 860-635-1500



 1.727.565.2201

 systems@ysi.com

 [YSI.com/systems](http://YSI.com/systems)

